

Description

CHARACTERISTICS

- ☐ Pneumatically applied - spring release
- ☐ Water cooled for good heat transfer
- ☐ 1, 2, 3 or 4 disc design
- ☐ Standard or Low Coefficient (LC) friction pads for various torque requirements
- ☐ Multi-range actuators for optimum torque selection optional on some sizes
- ☐ For use in dry environment only

UTILISATION

- ☐ End-of-shaft or through shaft mounting

TYPICAL USES

- ☐ Continuous slipping and tension control applications
- ☐ Heavy duty stopping and holding applications
- ☐ Fast engagement and cyclic applications

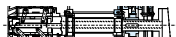
MOUNTING PRECAUTIONS

- ☐ Outer ring of brake must be supported by machine frame
- ☐ Inner hub of brake must be supported by machine shaft
- ☐ Designed for horizontal shaft axis. Consult Wichita if vertical mounting is required
- ☐ Maximum water inlet pressure is 4.5 bar

SAFETY

- ☐ The brake should be suitably guarded when in use

Mounting example



Einbaubeispiel



Model	Flow configuration Fließbild		Inlet/outlet pipe threads Eintritt/Austritt Rohrgewinde		Min. pipe bore Min. Rohrdurchgang		System backpressure Systemgegendruck	
	WCM	CSM	WCM	CSM	WCM (mm)	CSM (mm)	WCM (bar)	CSM (bar)
106	Series / Seriell	Series / Seriell	1/4" BSPT female-male / Außen-Innen	1/4" BSPT female-male / Außen-Innen	9	12	0	0.3
206	Series / Seriell	Series / Seriell	1/4" BSPT female-male / Außen-Innen	1/4" BSPT female-male / Außen-Innen	9	12	0.1	0.9
206	Series / Seriell	Series / Seriell	1/2" BSPT female-male / Außen-Innen	1/2" BSPT female-male / Außen-Innen	16	16	0.1	0.3
208	Series / Seriell	Series / Seriell	1/2" BSPT female-male / Außen-Innen	3/8" BSPT female-male / Außen-Innen	16	16	0.25	0.9
211	Series / Seriell	Series / Seriell	1/2" BSPT female-male / Außen-Innen	3/8" BSPT female-male / Außen-Innen	16	16	0.3	0.6
211	Series / Seriell	Series / Seriell	1/2" BSPT female-male / Außen-Innen	3/8" BSPT female-male / Außen-Innen	19	19	0.8	1.5
214	Series / Seriell	Series / Seriell	1/2" BSPT female-male / Außen-Innen	1/2" BSPT female-male / Außen-Innen	19	19	0.35	0.5
214	Series / Seriell	Series / Seriell	1/2" BSPT female-male / Außen-Innen	1/2" BSPT female-male / Außen-Innen	19	19	0.9	2
216	Series / Seriell	Series / Seriell	1/2" BSPT female-male / Außen-Innen	1/2" BSPT female-male / Außen-Innen	19	19	0.5	0.8
216	Series / Seriell	Series / Seriell	1/2" BSPT female-male / Außen-Innen	3/4" BSPT female-male / Innen-Innen	19	19	1.2	0.8
218	Series / Seriell	Series / Seriell	1/2" BSPT female-male / Außen-Innen	1/2" BSPT female-male / Außen-Innen	19	19	0.75	1.7
218	Parallel	Parallel	3/4" BSPT female-female / Innen-Innen	3/4" BSPT female-female / Innen-Innen	25	25	0.3	1.2
121	Parallel	Parallel	3/4" BSPT female-female / Innen-Innen	1" BSPT female-female / Innen-Innen	25	25	0.3	0.45
221	Parallel	Parallel	3/4" BSPT female-female / Innen-Innen	1 1/4" BSPT female-female / Innen-Innen	25	32	0.55	1.3
124	Parallel	Parallel	3/4" BSPT female-female / Innen-Innen	1" BSPT female-female / Innen-Innen	25	25	0.7	1.1
124	Parallel	Parallel	3/4" BSPT female-female / Innen-Innen	1 1/4" BSPT female-female / Innen-Innen	25	25	1.4	2
124	Parallel	Parallel	1 1/2" BSPT female-female / Innen-Innen	1 1/2" BSPT female-female / Innen-Innen	25	32	2	2
127	Parallel	Parallel	3/4" BSPT female-female / Innen-Innen	1" BSPT female-female / Innen-Innen	25	25	1.1	
227	Parallel	Parallel	3/4" BSPT female-female / Innen-Innen	1 1/4" BSPT female-female / Innen-Innen	25	32	2	
130	Parallel	Parallel	3/4" BSPT female-female / Innen-Innen	Pipe direct to inlets/outlets on each water jacket	25	25	1.2	
230	Parallel	Parallel	1/4" BSPT female-female / Innen-Innen	Direct to Eintritt/Austritt an jedem Wassermantel	32	32	2.2	
136	Parallel	Parallel		2 inlets on 1 plate unit / 2 Einlässe bei 1 Platteneinheit	32	32		
236	Parallel	Parallel		4 inlets on 2 plate unit / 4 Einlässe bei 2 Platteneinheit	39	39		
336	Parallel	Parallel		6 inlets on 3 plate unit / 6 Einlässe bei 3 Platteneinheit	50	50		

Water supply

(1) Description

Brakes are supplied complete with hoses and fittings ready to be connected to inlet and outlet pipes.

Where the outlet pipe connects directly into the "floating plate" water jacket at the airbend end of the brake, a flexible hose must be used. Ensure that the inlet hose is positioned at the bottom of the brake.

(2) Flow configuration

Smaller brakes are piped up for series flow. On larger models parallel flow is used to avoid excessive backpressure.

Air Sets

Air sets are optional and consist of elbows or quick exhaust valves, hoses and pipe fittings. For tension control duties customers generally pipe direct to the air set connections without using an air set. Where there are two inlets, one can be plugged. The thread is 1/2" NPT/BSPT. For fast response or cycling duties an air set comprising elbows, hoses and fittings can be supplied.

Silenced quick exhaust valves (SOEV's) can be used in place of elbows on sizes 108 and 111 to give a further, although small, improvement in response times. Where noise is not a problem, quick exhaust valves without silencers (QEV's) can be used.

MEX (55) 53 63 23 31 MTY (81) 83 54 10 18
 GRO (442) 1 95 72 60 ventas@industrialmagza.com
INDUSTRIAL MAGAZA
 DIST. AUTORIZADO

Model	# Hoses # Schläuche	Air Inlet connection "A" Luft Eintrittsanschluss "A"
104H	1	1/4" NPT/BSPT male / Außengewinde
104H-208	1	1/2" NPT/BSPT male / Außengewinde
111-316	2	1/2" BSPT female / Innengewinde
118-121	3	3/4" BSPT female / Innengewinde
124H-327	3	1 1/4" BSPT female / Innengewinde
130H-230H	4	1 1/4" BSPT female / Innengewinde

Air set coding example Beispiel für Luftsatzbezeichnung		Air set No. Luftsatz Nr.	
332 - 18 - SOX			
Qty of air connections Anzahl der Luftanschlüsse	Qty of fittings Anzahl der Armaturen	Qty of hoses Anzahl der Schläuche	Approx hose length (') ca. Schlauchlänge (')
3	3	2	- 18 -

SOX
 E = elbows / Krummer
 O = QEV / Schnellluftventil
 SQ = silenced QEV / Schalldämpfendes Schnellluftventil
 X = pipe cross / Rohrkreuz
 T = pipe tee / T-Stück

